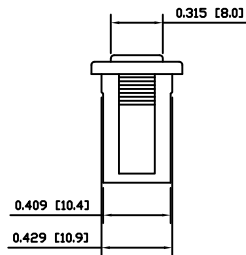
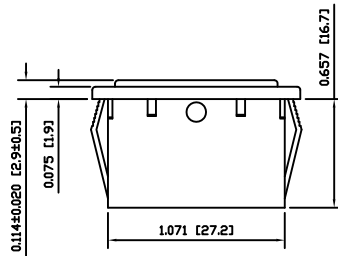
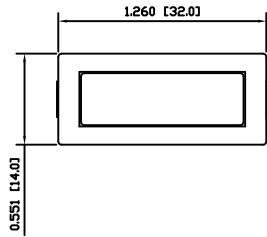


**SPECIFICATIONS**

FUNCTION:  
Switch Blank

APPROVALS:  
**RoHS**  
COMPLIANT



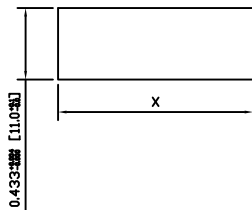
**COLORS AND MARKINGS**

BODY:  
Black  
  
ACTUATOR:  
Black  
  
MARKINGS:  
None  
  
MARKING COLOR:  
None

**MATERIALS**

BODY:  
Polyamide 6/6 (PA66), UL94 V-2  
  
ACTUATOR:  
Polyamide 6/6 (PA66), UL94 V-2

**SUGGESTED PANEL CUTOUT**



PANEL THICKNESS		X
0.030~0.049	[0.75~1.25]	1.181 [30.0]
0.049~0.079	[1.25~2.00]	1.197 [30.4]
0.079~0.118	[2.00~3.00]	1.210 [30.7]

ACTUATOR	A	09/06/29	CAB
BODY	A	09/06/29	CAB
COLORS	A	09/06/29	CAB
MATERIALS	A	09/06/29	CAB
SPECIFICATIONS	A	09/06/29	CAB
REFERENCE	REV.	DATE	BY

THE INFORMATION CONTAINED IN THIS DOCUMENT IS PROPRIETARY TO E-SWITCH AND IS NOT TO BE COPIED OR TRANSFERRED

A	INITIAL RELEASE	18932	10/03/10	CAB
REV.	DESCRIPTION	PCR	DATE	DRAWN BY

DIMENSIONS	INCHES [MILLIMETERS]
GENERAL TOLERANCES	±0.008 [±0.2] / ±1°
SCALE	DRAWING NOT TO SCALE
PROJECTION	

RB10001100		
ITEM NUMBER	DATE	REVISION
38-RB10001100	MARCH 10, 2010	A